

ELEV 41

CAT C

WELLINGTON

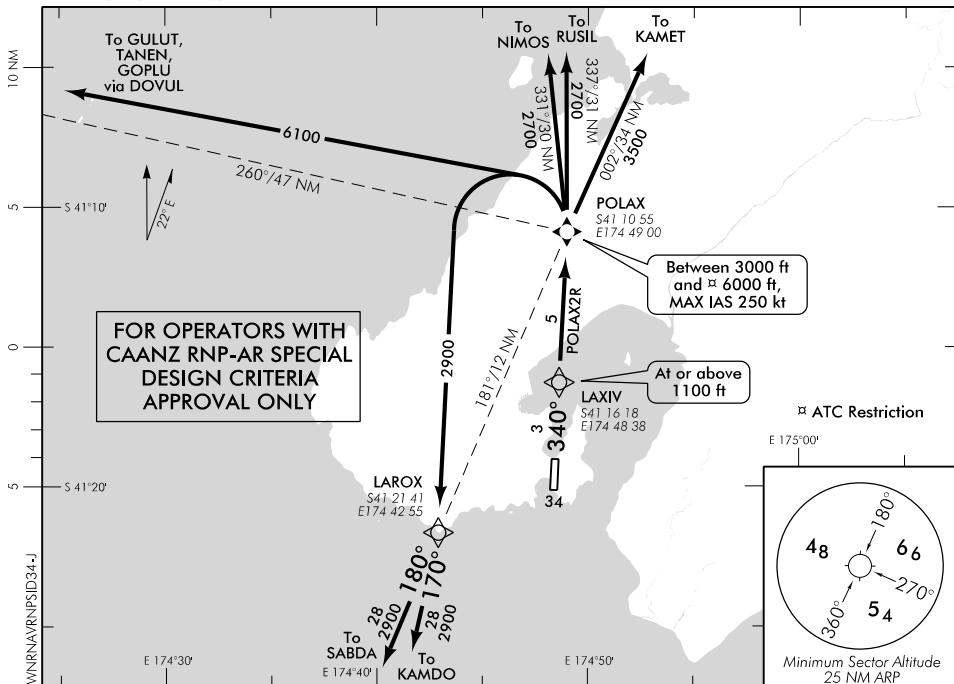
NZWN

RNAV (RNP) SID RWY 34

APPROACH: 122.3

TOWER: 118.8 125.25

ATIS: 126.9



ALL DEPARTURES

Contact WELLINGTON APPROACH 122.3 MHz as soon as practicable prior to 1500 ft, or as instructed

- Note 1. Minimum net climb gradient 3.3% (200 ft/NM) unless higher stated
 2. Approved operators to request POLAX2R prior to clearance delivery

- Requirements: 1. RNP 0.20 to POLAX, thence RNAV 1
 2. Use Wellington QNH only

RWY 34

POLAX TWO ROMEO DEPARTURE – RNAV (RNP) (POLAX2R)

MNM net climb gradient 6.8% (420 ft/NM) to 3000 ft

- Track 340° via LAXIV to POLAX (fly-over)
- Cross LAXIV at or above 1100 ft
- Cross POLAX between 3000 ft and 6000 ft

TRANSITIONS:

KAMDO

- From POLAX, turn LEFT, direct to LAROX, MAX IAS 250 kt until turn complete
- Track 170° to KAMDO

SABDA

- From POLAX, turn LEFT, direct to LAROX, MAX IAS 250 kt until turn complete
- Track 180° to SABDA

NIMOS

- From POLAX, turn LEFT, direct to NIMOS, MAX IAS 250 kt until turn complete

RUSIL

- From POLAX, turn LEFT, direct to RUSIL, MAX IAS 250 kt until turn complete

KAMET

- From POLAX, turn RIGHT, direct to KAMET, MAX IAS 250 kt until turn complete

OCEANIC TRANSITIONS:

For flights on transitions via GOPLU, TANEN or GULUT – FL260 or above:

- Cleared level FL250
- Expect further clearance to be filed prior to 100 WN DME
- Cross NZCC/NZZO FIR BDY at cleared level or advise ATC if unable

GOPLU

- From POLAX, turn LEFT, direct to DOVUL, MAX IAS 250 kt until turn complete
- Track 238° to GOPLU

TANEN

- From POLAX, turn LEFT, direct to DOVUL, MAX IAS 250 kt until turn complete
- Track 258° to TANEN

GULUT

- From POLAX, turn LEFT, direct to DOVUL, MAX IAS 250 kt until turn complete
- Track 284° to GULUT

Effective: 8 NOV 18

Changes from 13 SEP 18: KARSA WPT renamed KAMDO, CUSTOM transition removed.

ELEV 41

CAT A,B,C,D

WELLINGTON

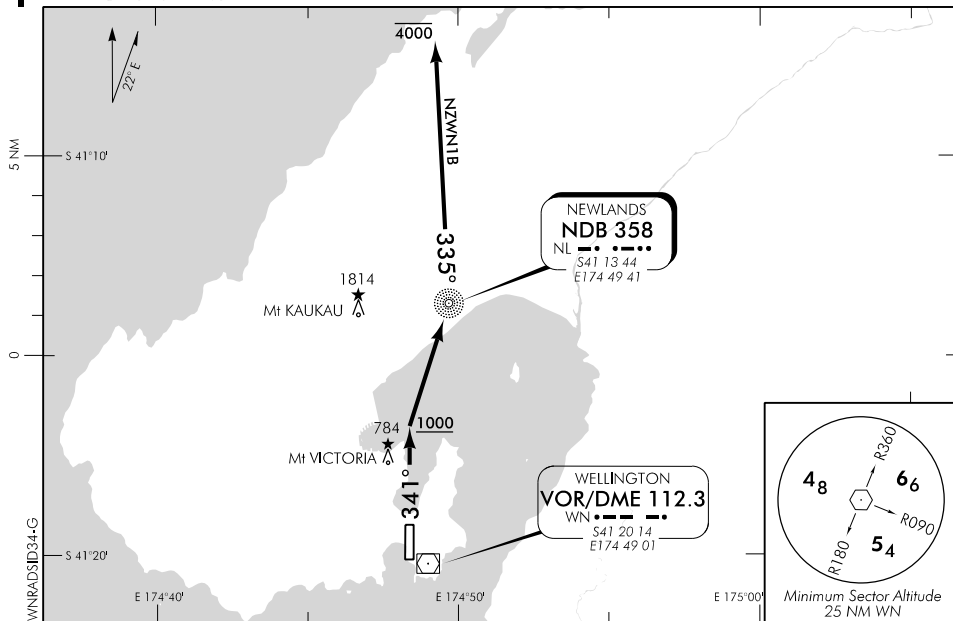
NZWN

RADAR SID RWY 34

APPROACH: 122.3

TOWER: 118.8 125.25

ATIS: 126.9



Changes from 24 MAY 18: Pageination, WN TWR secondary FREQ.

ALL DEPARTURES

Contact WELLINGTON APPROACH 122.3 MHz as soon as practicable prior to 1500 ft, or as instructed

- Note:
1. Minimum net climb gradient 3.3% (200 ft/NM) unless higher stated
 2. **CAT B aircraft speed restriction MNM 150 kt MAX 170 kt** – if unable to comply advise Ground on start-up
 3. Turns prior to crossing RWY end not authorised

WELLINGTON ONE BRAVO DEPARTURE – RADAR (NZWN1B)

MNM net climb gradient 6.6% (410 ft/NM) to 2000 ft

- Track 341° (RWY Centreline) to MNM 1000 ft
- At 1000 ft turn RIGHT to NL NDB
- At NL NDB turn LEFT bearing 335° from NL NDB
- Maintain 4000 ft
- Expect radar vectors

OCEANIC TRANSITION

For flights that will cross the NZCC/NZZO FIR BDRY on any track from GULUT south to VANDA – FL260 or above

- At completion of SID track direct to Oceanic boundary point or as directed by radar
- Cleared level FL250
- Expect further clearance to filed level prior to 100 WN DME
- Cross NZCC/NZZO FIR BDRY at cleared level or advise ATC if unable