

ELEV 41

CAT A,B,C,D

WELLINGTON

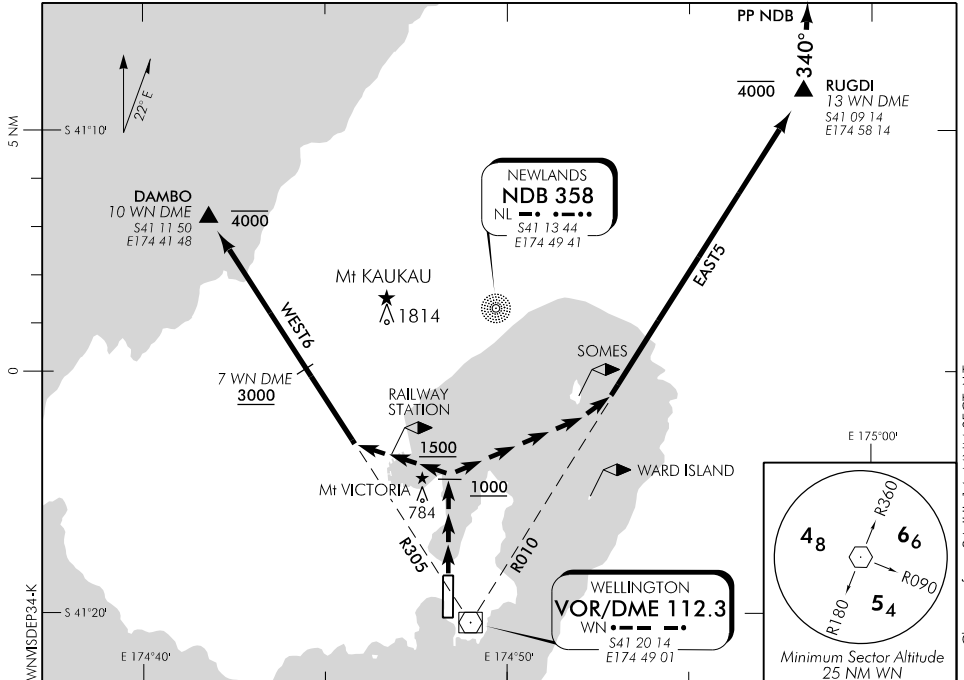
NZWN

VISUAL DEPARTURES RWY 34

CONTROL: 122.3

TOWER: 118.8 120.0

ATIS: 126.9

**ALL DEPARTURES**

Note 1. ATC requirement:

- CAT B aircraft speed restriction MNM 150 kt MAX 170 kt – if unable to comply advise Ground on start-up.**
- Maintain terrain clearance visually to altitude specified, then MNM net climb gradient 3.3% (200 ft/NM)
- Available by DAY only

EAST FIVE DEPARTURE (EAST5)

- Maintain RWY centreline to **MNM 1000 ft**
- Turn **RIGHT**, track between SOMES and WARD ISLAND to intercept R010 WN VOR to RUGDI
- Passing **1500 ft** contact CONTROL 122.3 advising departure being flown
- Maintain terrain clearance visually to 4000 ft
- Maintain **4000 ft** to RUGDI, turn **LEFT**, track 340° to PP NDB

NOTE: ATC may instruct aircraft to turn **LEFT** at MNM 3000 ft, or **RIGHT** at MNM 4000 ft provided aircraft crossing RUGDI are in continuous climb

WEST SIX DEPARTURE (WEST6)

- Maintain RWY centreline to **MNM 1500 ft**
- Turn **LEFT**, track via RAILWAY STATION to intercept R305 WN VOR to DAMBO
- Passing **2000 ft** contact CONTROL 122.3 advising departure being flown
- Maintain terrain clearance visually to 3000 ft
- Reach **3000 ft** by 7 WN DME
- Maintain **4000 ft** to DAMBO, then intercept cleared route or as directed by radar

Effective: 31 MAR 16

© Civil Aviation Authority

WELLINGTON
VISUAL DEPARTURES RWY 34

