

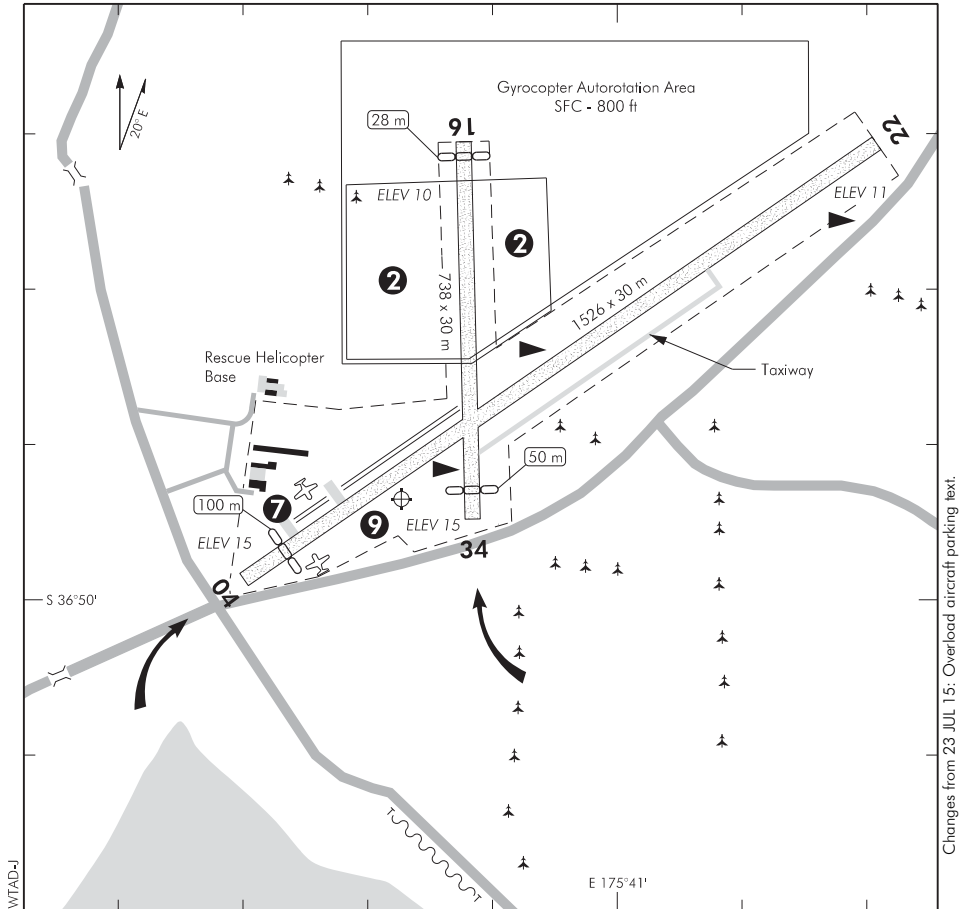
ELEV 15

NZWT

NON-CERTIFICATED

**WHITIANGA  
AERODROME**

UNATTENDED: 124.5



1. Circuit: RWY 16, 22 — Left hand  
RWY 04, 34 — Right hand

- 2 Model aircraft flying may take place during daylight hours.
3. **CAUTION:** Bird hazard. Gulls, plovers and paradise ducks on aerodrome.
4. Microlight, gyrocopter, gliding and parachute operations.
5. **CAUTION:** Street lights on approach to RWY 04.
6. **CAUTION:** During winter months confine aircraft movements to the centreline of both runways. Areas of soft ground can develop outside runway boundaries.
- 7 Pick-up/set down area — no parking.
8. Landing/facilitation fees — see website.
- 9 Overload aircraft parking backed to fenceline.

S 36 49 54 E 175 40 43\*

**Effective: 26 MAY 16**

© Civil Aviation Authority

**WHITIANGA  
AERODROME**

NZWT

**RWY**

RWY	SFC	Strength	Gp	Slope	ASDA	Take-off distance			LDG DIST
						1:20	1:30	1:40	
04 22	Gr	ESWL 1270	8	Nil	1526 1526	1526 1426			1426 1526
16 34	Gr	ESWL 1270	5	Nil	738	688 710			710 688

**MINIMA**

IFR Take-off		
RWY	Day	Night
All	600-2000	NA

**LIGHTING**

Nil

**FACILITIES**

Fuel: Z Energy, Avgas 100, swipecard, pin number required

**SUPPLEMENTARY**

Operator: Mercury Bay Aero Club, PO Box 44, Whitianga.  
 Tel/Fax (07) 866 5128  
 Email: [mbac@xtra.co.nz](mailto:mbac@xtra.co.nz)  
 Web: [www.MBAC.co.nz](http://www.MBAC.co.nz)  
 Contact: Tony Turner Tel (027) 314 1826

Available for general use.

Landing fees payable. For details see MBAC website. Bank a/c 02 0496 0012856 00.