

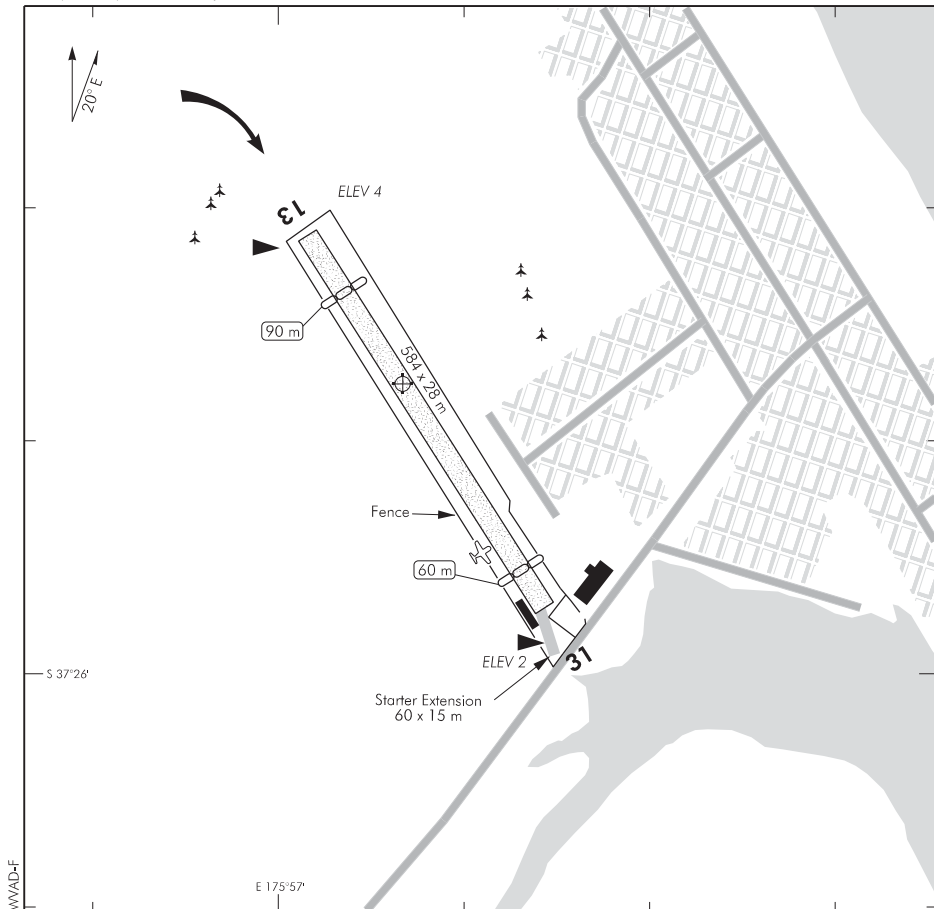
ELEV 4

NZWW

NON-CERTIFICATED

**WAIHI BEACH
AERODROME**

UNATTENDED: 123.65



Changes from 10 NOV 16: Aircraft parking symbol and caution added.

1. Circuit: RWY 13 — Right hand
RWY 31 — Left hand
2. RWY 31 requires a curved approach for the last 300 m due to trees on the high ground to the south.
3. **CAUTION:** Surface soft after heavy rain.
4. **CAUTION:** NORDO microlights operate in the area.

S 37 25 48 E 175 57 07*

Effective: 14 SEP 17

© Civil Aviation Authority

**WAIHI BEACH
AERODROME**

**WAIHI BEACH
OPERATIONAL DATA**

NZWV

RWY

| RWY | SFC | Strength | Gp | Slope | ASDA | Take-off distance | | | LDG DIST |
|----------|-----|--------------|--------|-------|------|-------------------|------|------|-------------|
| | | | | | | 1:20 | 1:30 | 1:40 | |
| 13 13 | Gr | ESWL 1180 | 3 3 | 0.1D | | 524 | | | 494 |
| 31 31 | Gr | ESWL 1180 | 4 3 | 0.1U | | 554* | | | 524 |

* Includes 60 m starter EXTN

LIGHTING

Nil

FACILITIES

Fuel: Nil

Parking West of RWY, north of hangars by fence

SUPPLEMENTARYOperator: Waihi Beach Flyers
Tel (07) 863 5296, Mob (021) 059 3040

Landing fees of \$10 a day are payable in the honesty box situated on the north end of the hangars

Overnight parking fee \$10 applies

Web site (fees) — <http://nzwv.weebly.com/fees.html>