

ELEV 1709

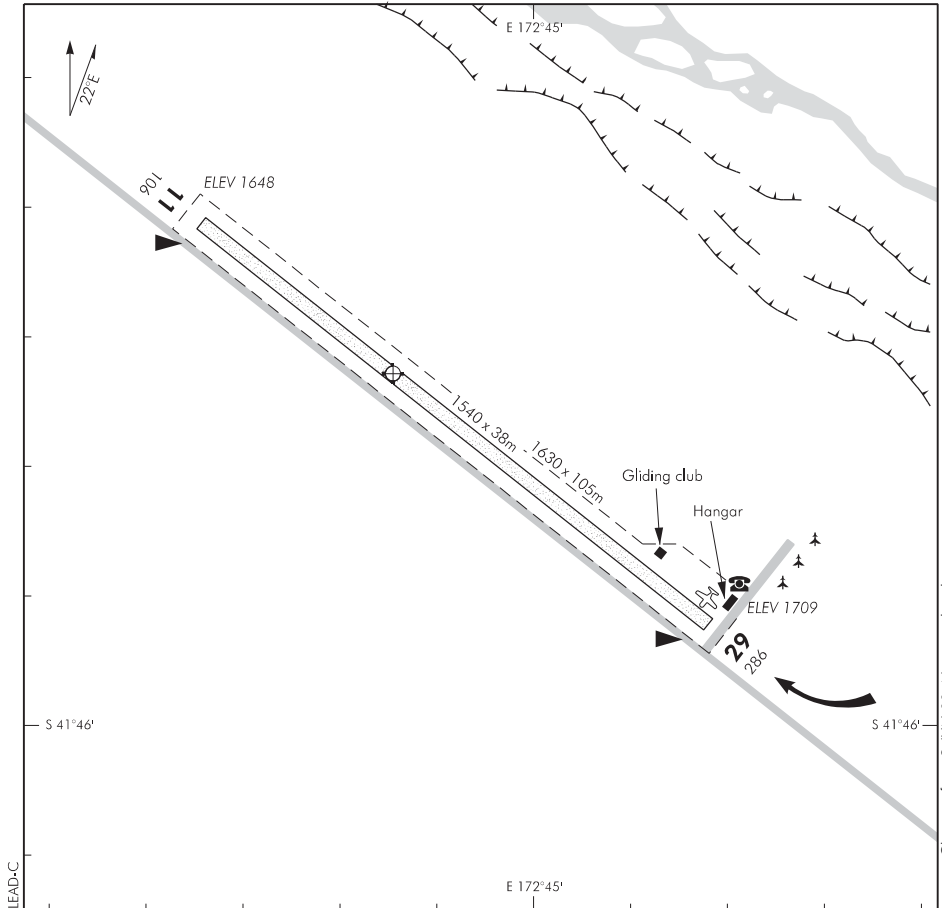
LAKE STATION/NELSON LAKES

NZLE

NON-CERTIFICATED

AERODROME

UNATTENDED: 119.1



1. Circuit: RWY 11 — Left hand
RWY 29 — Right hand

Due to possible contact with winch cables, aircraft should not perform a standard overhead join of the circuit.

2. Glider winching operations are year-round on weekends, public holidays and occasional week days with winch launches to 4200 ft QNH (2500 ft agl). Aircraft intending to land or operate in the vicinity should make intentions known on 119.1 Mhz.
3. The runway is a central/grass strip flanked on both sides by strips of uneven ground.
Note: A worn track on the northern side of the strip used by vehicles to retrieve winch cables should not be confused with the centreline of the runway as this could result in contact with uneven ground.
4. During gliding operations as winch cables are laid on the northern side of the strip, aircraft backtracking should do so on the southern side of the strip.
5. Sheep grazing periodically. Aircraft operators needing to land mid-week should have prior contact with the owners of Lake Station i) Malcolm McConochie Tel (03) 521 1843 or ii) Doug McConochie Tel (03) 521 1844.
6. Aircraft staying overnight should provide their own tie-down pickets.

S 41 45 33 E 172 44 45*

Effective: 18 SEP 14

LAKE STATION/NELSON LAKES

© Civil Aviation Authority

AERODROME

RWY

RWY	SFC	Strength	Gp	Slope	ASDA	Take-off distance			LDG DIST
						1:20	1:30	1:40	
11 29	Gr	ESWL 8000	8	0.43U 0.43D			1540		1540

LIGHTING

Nil

FACILITIES

Toll-bar telephone.

SUPPLEMENTARY

Operator: Nelson Gliding Club
PO Box 277, Nelson
Tel (03) 548 1934
Email: jbandsjh@gmail.com

Aerodrome: Tel (03) 521 1870

Available for general use without the permission of the operator.

Landing fees payable: \$10/landing. Payment to be direct credited to bank account
03-1354-0336374-00 (put aircraft registration as reference)
or can be paid at time of landing in the payment box provided.