

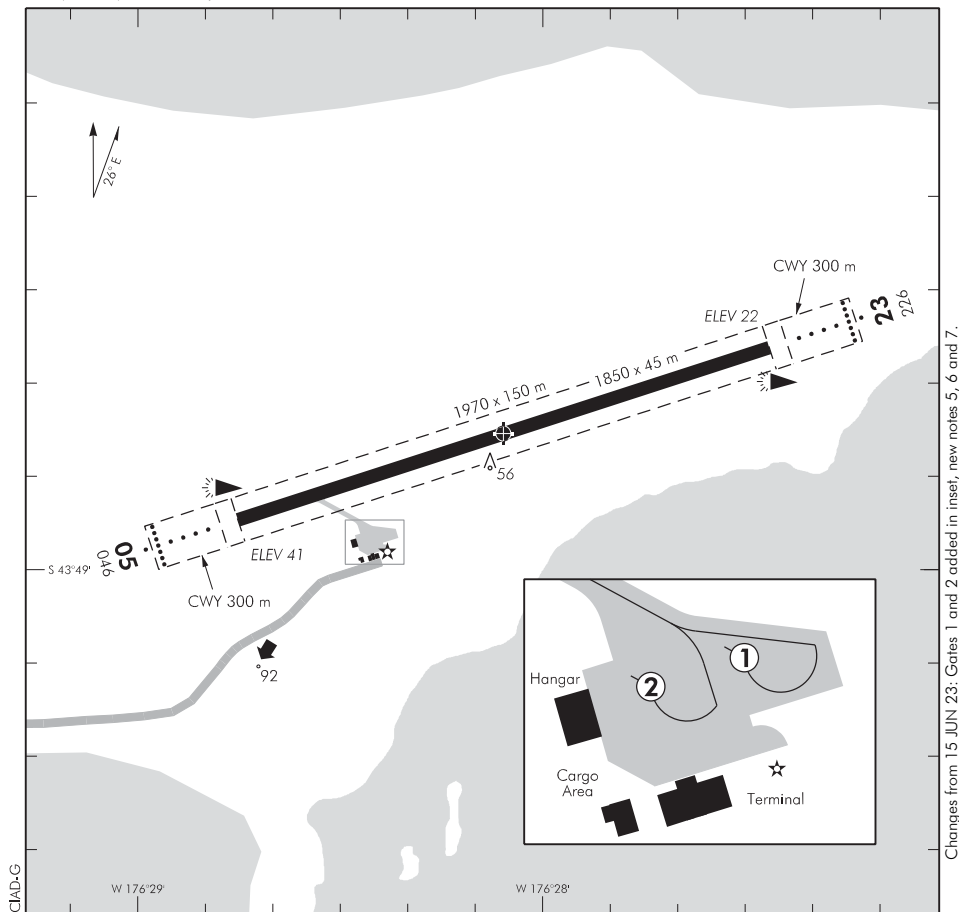
ELEV 41

NZCI

UNATTENDED: 118.1

CHATHAM IS/TUUTA

AERODROME



1. All movements confined to sealed areas.
2. Aircraft over 25,000 kg are to turn at runway ends. Turning areas marked.
3. All aircraft above 3500 kg MCTOW are to be marshalled onto the apron.
4. **CAUTION:** Bird hazard — birds continually present.
5. Apron Gate 1 — B737 ground operations limited to Apron Gate 1 — jet blast hazard.
6. Aircraft to park with engines within marked areas at Gates 1 and 2.
7. Limited parking available — aircraft operators should coordinate with the local operator, and notify the Airport Operator if parking is required for longer than four hours — scheduled and aero ambulance operators exempt.

S 43 48 45 W 176 28 06

Effective: 17 APR 25

© Civil Aviation Authority

CHATHAM IS/TUUTA

AERODROME

Changes from 15 JUN 23: Gates 1 and 2 added in inset, new notes 5, 6 and 7.

RWY

RWY	SFC	Strength	Gp	Slope	ASDA	Take-off distance			LDG DIST
						1:20	1:30	1:50	
05 23	B	PCN 42 F/D/X/T	8	0.31D 0.31U	1850			2150	1850

RESA RWY 05/23 240 x 150 m each end

Runway conditions not monitored

LIGHTING

PAL 124.0: Non-standard operation — transmit 7 pulses within 5 seconds. Lights will remain lit for 30 minutes. Activates Runway Edge Lights (REDL – LIL), Runway End Lights (RENL – LIL), Approach Lights (ALS – LIL), Runway End Identifiers (REIL – LIL) and PAPI – LIL both ends. Taxiway/Apron Edge. Hold Point. ABN and WDI.

Yellow light on terminal building flashes for 10 minutes before lights turn off.

Repeat transmission of 7 pulses within 5 seconds to reset lights for a further 30 minutes.

All lights start on High Power (100%). Transmit 5 pulses in 5 seconds to change to Medium Power (40%). Transmit 3 pulses in 5 seconds to change to Low Power (20%).

The 30-minute cycle can be started again by activating PAL

Runway: 05/23 REIL, LIL RWY PAPI 3.0/TCH 48
LIL ALS 1–Bar

Activation and dimming also by ground personnel

RWY edge light spacing — 60 m

Taxiway: Blue edge lights

Aerodrome: ABN FLG W 2.0 SEC (PAL or GRD operated) WDI

Apron: Floodlighting — activated by ground personnel
Blue edge lights

Hold point: Yellow edge lights

(continued)